

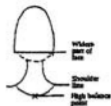
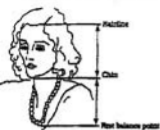
Image Counseling by Marcia Lavender
 mmmlavender@gmail.com

A featured speaker at
 The Women's Health & Beauty Fair
 October 27, 2009 - Ajijic

CHART #1 FACIAL LINES

CHART #1 OBSERVE - Facial Lines	STRAIGHT	CURVED
Hairline and it's distance to brow		
Eyebrows - distance between, at center and edge		
Eyes- distance between, at center and edge		
Length of nose and strength or weakness		
Nose-distance between tip and chin, observe from side • is there a right angle formed from the nose tip to the chin and back to the jaw into the throat?		
Mouth - edges in vertical relationship to pupil of eye when looking forward		
Lip - lip fullness or thickness		
Predominant or weak jaw & chin		
Observe - overall best feature		
Observe - overall weakest feature		
Side of Face - observe three vertical panels		
- one side		
- center opposite side		
- opposite side		
Does the face have: (include the ears, chin and throat area)		
_____ Predominantly straight lines		
_____ Predominantly curved lines		
_____ Evenly distributed lines		

THESE ARE THE PERSONAL BALANCES – THE MEASUREMENTS COMING FROM USING YOUR STRING!



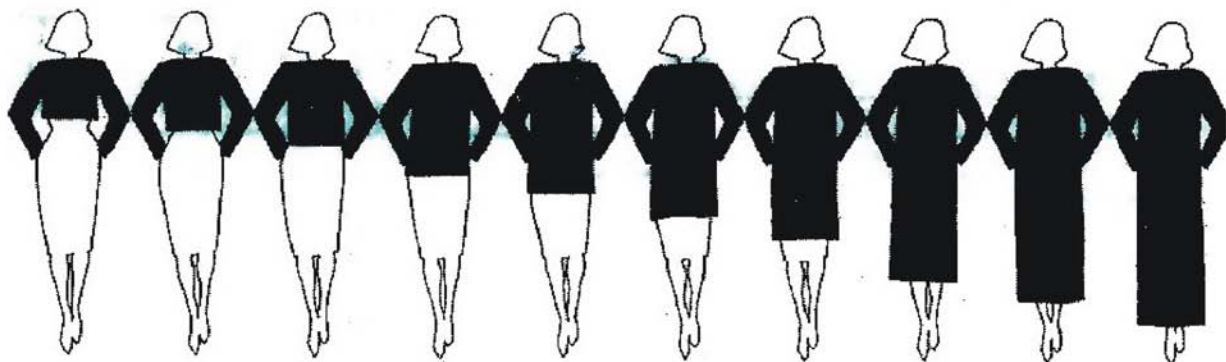
BALANCE OUTLINE FOR CLIENT ANALYSIS

Begin with measurements:

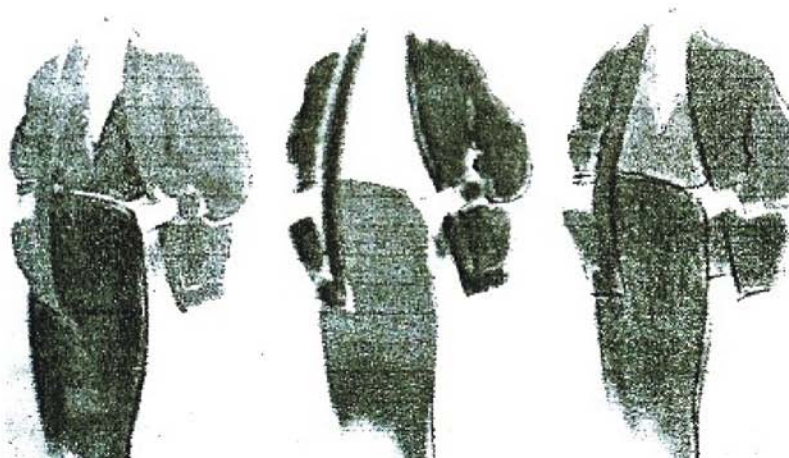
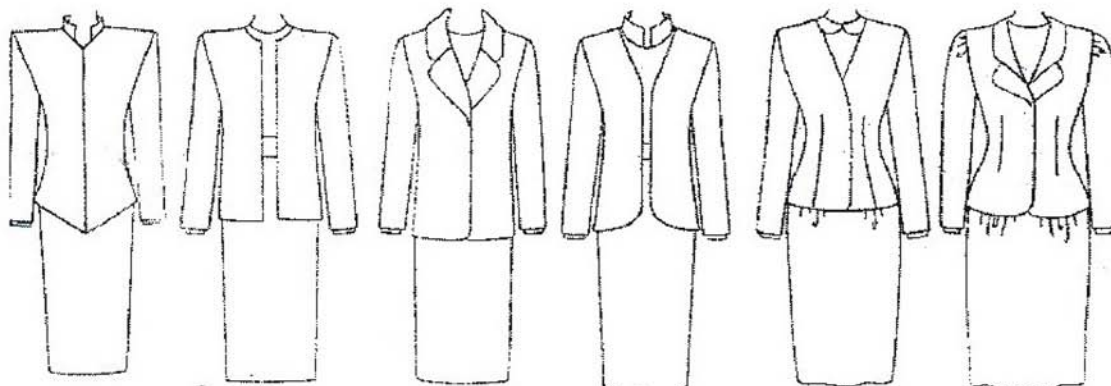
1. length of hair over ears (can ear be exposed?)
2. bang length
3. inverted "v" neckline line parting
4. style height - at crown and bang
5. side burn length
6. part placement if not natural
7. neckline length
8. style line division in back of head
9. the proper placement of glasses on the face

LENGTHS: TOPS, JACKETS AND COATS

<i>Cropped</i>	<i>Waist</i>	<i>Hipbone</i>	<i>Midhip</i>	<i>Below the Hip</i>	$\frac{3}{4}$	$\frac{7}{8}$	<i>Midcalf</i>	<i>Long</i>	<i>Evening Maxi</i>
----------------	--------------	----------------	---------------	----------------------	---------------	---------------	----------------	-------------	---------------------



WHAT COLLAR DRAWS YOUR ATTENTION FIRST?



FACES, SHAPES AND STYLES



Notice her earrings and the exact shape of her little bow mouth, and they repeat the angles of her brows and eyes, which are also mirrored in the angle of her neckline.

Woman with a cigarette by Andrew Lloyd



The large contiguity of her neckline repeats the shape of her lips, which are full and wide. Though the contiguity is up scaled for drama, notice the length-to-width relationship is similar to that of her mouth.



Notice how the curve of the neckline and the shape of her hair style relate to the curve of her forehead. Also notice how the shape of the deep mirrors the shape of her nose.



Here the hair is treated like an ornamentation that repeats the route line of her forehead. If the curls were flatter, it would not have the same effect.



Rippled earrings repeat the ripple in the facial contour and in the same scale. The ripples are neither too narrow nor too wide.



The round earrings are in keeping with the scale of her features and repeat the round line around the nose tip, cheeks and eyes – highlighting all three features.



Notice that the shape of her earrings repeats the shape of her jaw line, facial shape, and the angles of her ear, eyebrows, nose and mouth.



The shape of beautiful paisley eyes can be repeated in jewelry or in a paisley print, close to the face.



Diamond shaped earrings repeat the shape and scale of the face, eyes, and eyebrow creating a visual resonance that dramatizes these features. If the diamond shape of the earrings were narrower or wider, the earrings would not be to scale, thus losing that resonance.